

- NOTES:
- THIS PLAN MUST BE READ IN CONJUNCTION WITH THE DRAFT RAILWAY ORDER SCHEDULES, THE ENVIRONMENTAL IMPACT ASSESSMENT REPORT AND THE RAILWAY ORDER PLANS.
  - PROJECT CHAINAGE IS IN KILOMETRES (KM), ROUTE MILE POSTS ARE SHOWN FOR INFORMATION.

- LEGEND:
- DEVELOPMENT BOUNDARY
  - PROPOSED COMPOUND ACCESS POINTS
  - EXISTING TRACK ACCESS POINTS
  - MILEPOST
  - NEW ELECTRIFICATION AND / OR TRACK WORKS IN EXISTING RAIL CORRIDOR
  - EXISTING RAIL CORRIDOR - MINIMAL OR NO WORKS REQUIRED
  - EXISTING RAIL TRACK REMOVED
  - NEW ELECTRIFICATION IN EXISTING RAIL CORRIDOR
  - VIADUCT MODIFICATIONS
  - PARAPET MODIFICATIONS
  - 38KV OVERHEAD DIVERSION
  - 38KV UNDERGROUND DIVERSION
  - MV OVERHEAD DIVERSION
  - MV UNDERGROUND DIVERSION
  - LV OVERHEAD DIVERSION
  - LV UNDERGROUND DIVERSION
  - EIR OVERHEAD DIVERSION
  - EIR UNDERGROUND DIVERSION
  - BT UNDERGROUND DIVERSION
  - COMBINED SEWER DIVERSION
  - EXISTING UTILITIES ASSUMED POSITION
  - PROPOSED SUBSTATION / SUBSTATION COMPOUND
  - CONSTRUCTION COMPOUND
  - NEW, PROPOSED OR MODIFIED INFRASTRUCTURE
  - EXISTING STATION
  - PROPOSED PLATFORM
  - LOCAL AUTHORITY BOUNDARY
  - BRIDGES
  - OBXX EXISTING BRIDGE / ROAD OVER RAILWAY CORRIDOR
  - UBXX EXISTING BRIDGE / ROAD/RIVER UNDER RAILWAY CORRIDOR

Disclaimer

© Irish Rail (2023). This drawing is confidential and the copyright in it is owned by Irish Rail. This drawing must not be either loaned, copied or otherwise reproduced in whole or in part or used for any purpose without the prior permission of Irish Rail.

© OpenStreetMap contributors

© Ordnance Survey Ireland and Government of Ireland. All O.S. data used for plans are printed under "Copyright Ordnance Survey Ireland 0038723 (OSI Aerial Data or OSI Lidar Data) & 2023 OSI, NMA, 100 (OSI Vector Data)". All elevations are in metres and relate to OSI Geoid Model (OSGM02) Mean Head as defined by existing Project Control. All Co-ordinates are in Irish Transverse Mercator Grid (ITM) as defined by OSI active GPS station Tallaght College (TLLG).



Rev	Date	Drm	Chk'd	App'd	Description
P01	21/02/2024	SMW	DB	GS	PLANNING ISSUE



Date	14/04/2023	Scale	1:2500 @ A1 1:5000 @ A3	Drawn	SR	Checked	RS	Approved	GS
Project Code	D+WP56	Originator Code	ARP	QMS Code	280275-00				

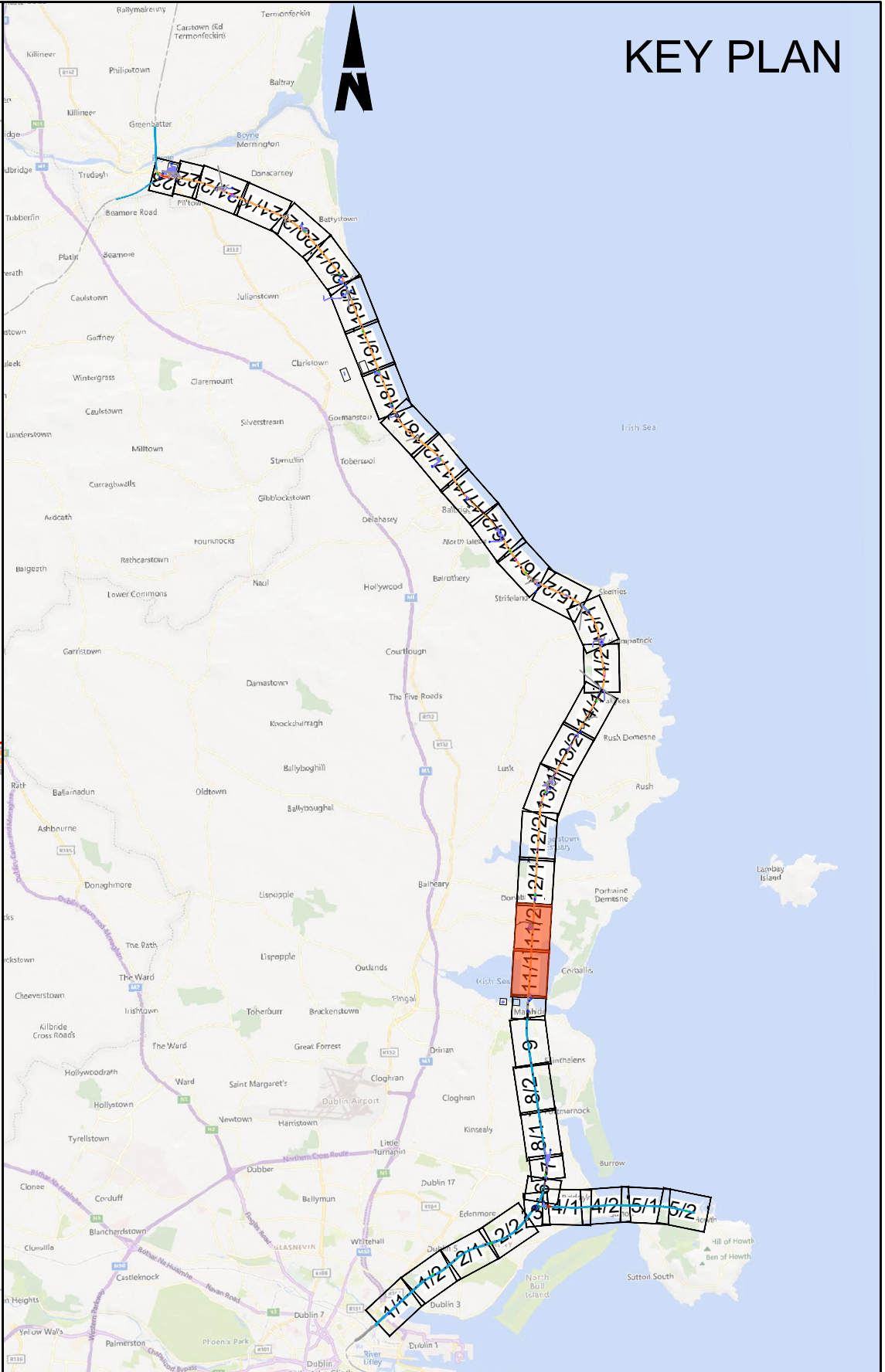
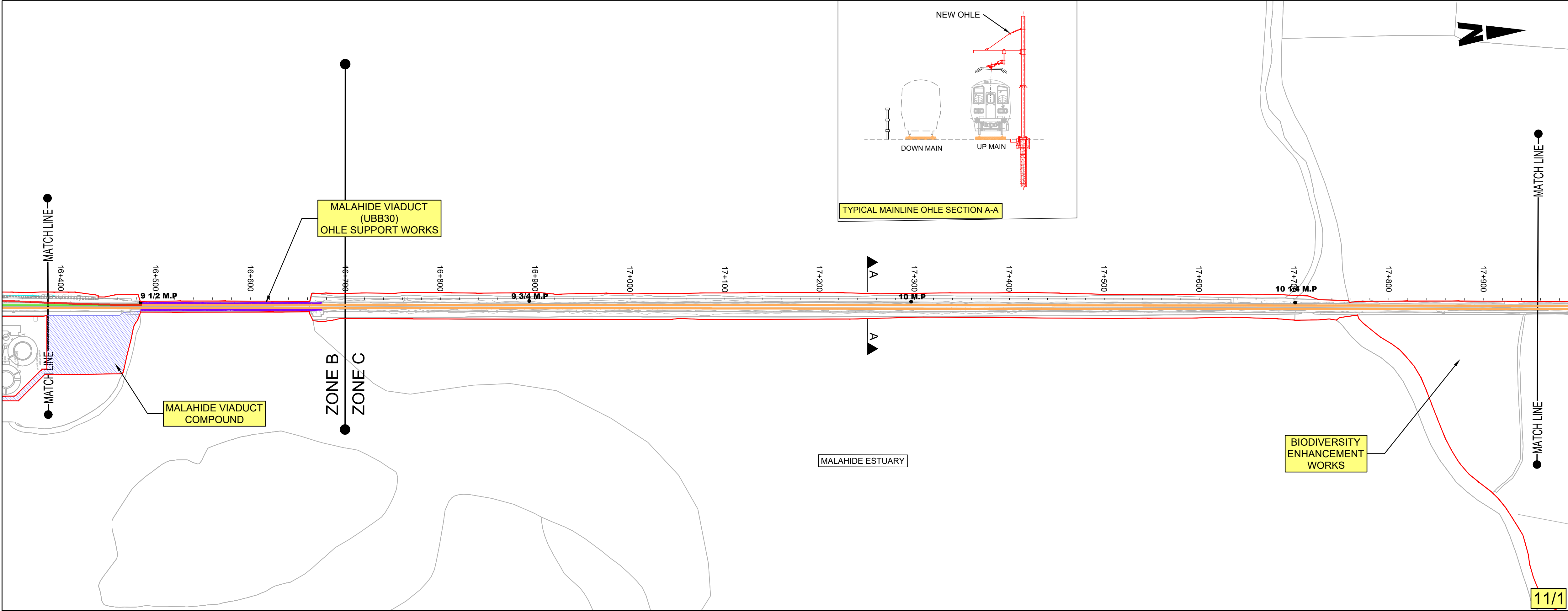
Project Title	DART+ COASTAL NORTH			
Drawing Title	NON-TECHNICAL SUMMARY DRAWINGS SOUTH MALAHIDE AND SURROUNDS			
Drawing File Name	D+WP56-ARP-P3-NL-DR-GE-002009	Sheet Number	09 of 23	Rev
		Status	S3	P01

DO NOT SCALE USE FIGURED DIMENSIONS ONLY







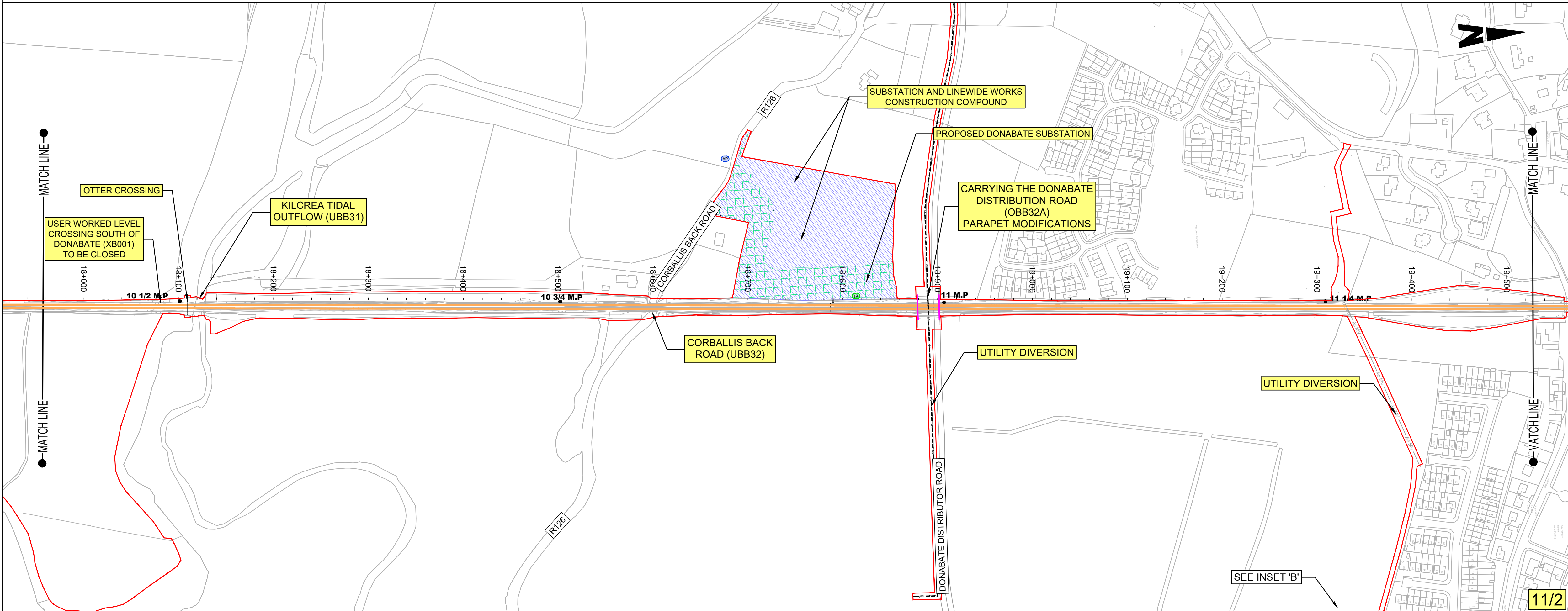


NOTES:

- THIS PLAN MUST BE READ IN CONJUNCTION WITH THE DRAFT RAILWAY ORDER SCHEDULES, THE ENVIRONMENTAL IMPACT ASSESSMENT REPORT AND THE RAILWAY ORDER PLANS.
- PROJECT CHAINAGE IS IN KILOMETRES (KM). ROUTE MILE POSTS ARE SHOWN FOR INFORMATION.

LEGEND:

- DEVELOPMENT BOUNDARY
- PROPOSED COMPOUND ACCESS POINTS
- EXISTING TRACK ACCESS POINTS
- MILEPOST
- NEW ELECTRIFICATION AND / OR TRACK WORKS IN EXISTING RAIL CORRIDOR
- EXISTING RAIL CORRIDOR - MINIMAL OR NO WORKS REQUIRED
- EXISTING RAIL TRACK REMOVED
- NEW ELECTRIFICATION IN EXISTING RAIL CORRIDOR
- VIADUCT MODIFICATIONS
- PARAPET MODIFICATIONS
- 38KV OVERHEAD DIVERSION
- 38KV UNDERGROUND DIVERSION
- MV OVERHEAD DIVERSION
- MV UNDERGROUND DIVERSION
- LV OVERHEAD DIVERSION
- LV UNDERGROUND DIVERSION
- EIR OVERHEAD DIVERSION
- EIR UNDERGROUND DIVERSION
- BT UNDERGROUND DIVERSION
- COMBINED SEWER DIVERSION
- EXISTING UTILITIES ASSUMED POSITION
- PROPOSED SUBSTATION / SUBSTATION COMPOUND
- CONSTRUCTION COMPOUND
- NEW, PROPOSED OR MODIFIED INFRASTRUCTURE
- EXISTING STATION
- PROPOSED PLATFORM
- LOCAL AUTHORITY BOUNDARY
- BRIDGES
- OBXX EXISTING BRIDGE / ROAD OVER RAILWAY CORRIDOR
- UBXX EXISTING BRIDGE / ROAD/RIVER UNDER RAILWAY CORRIDOR



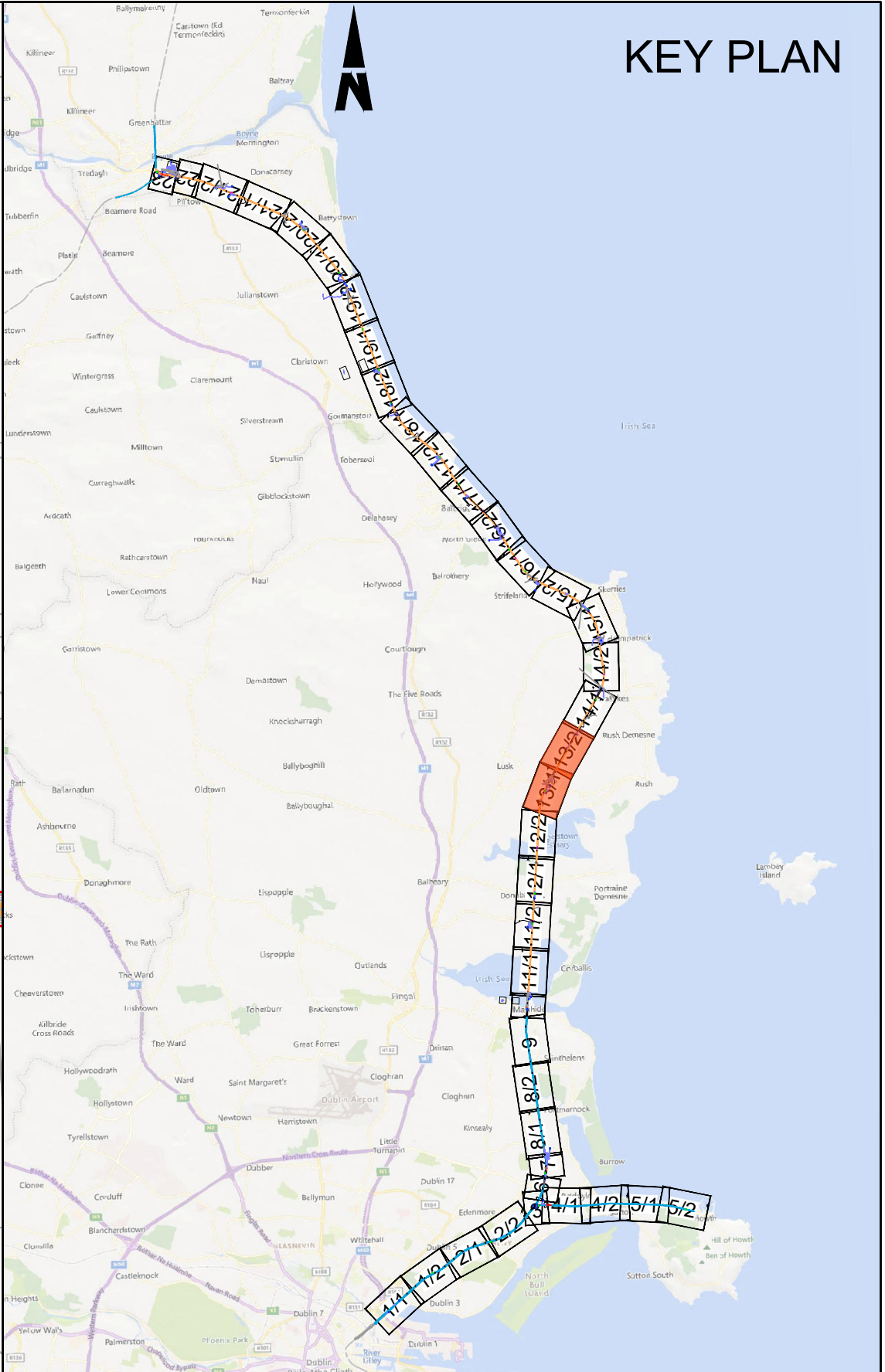
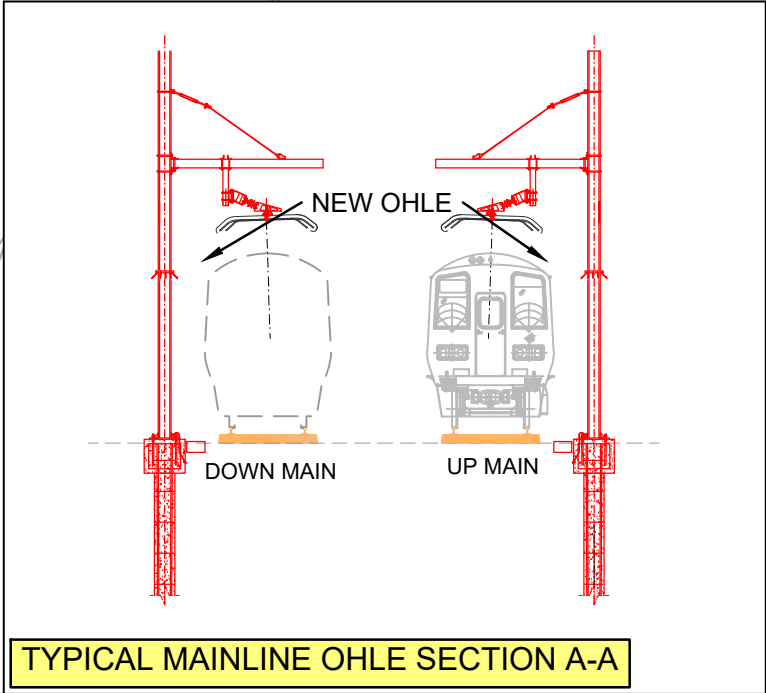
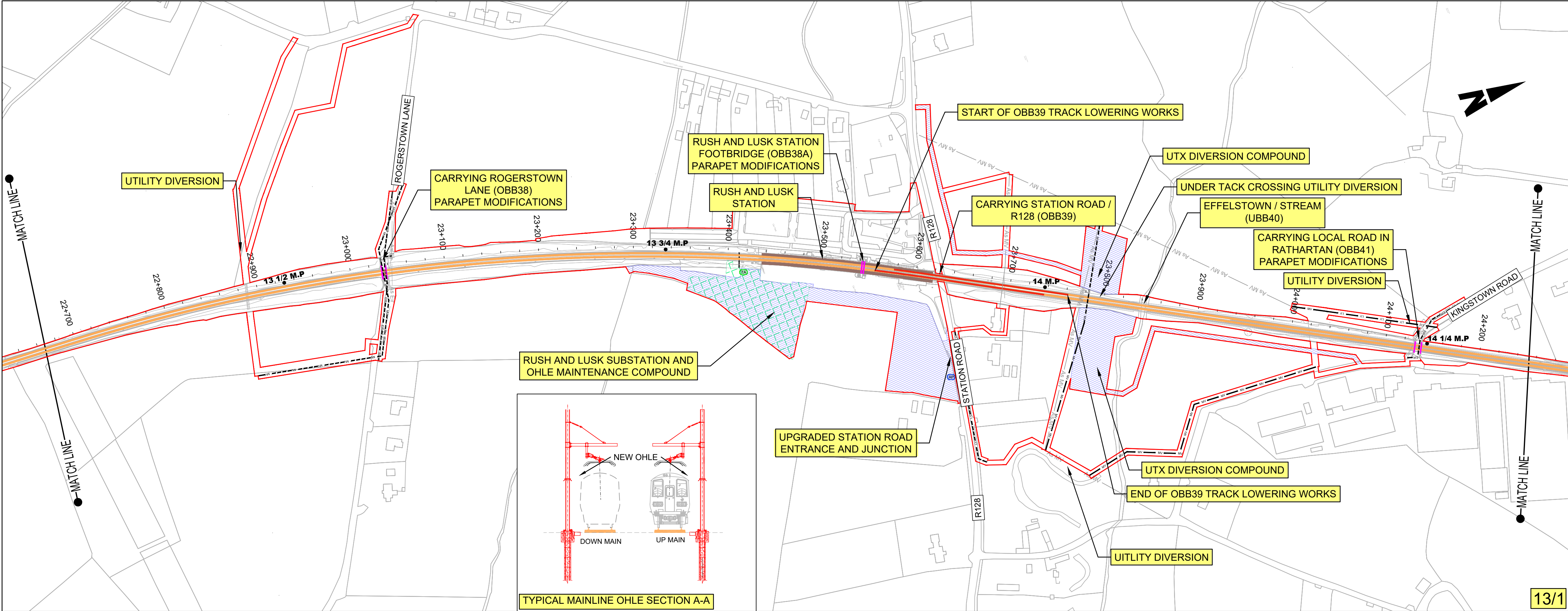
<div>Disclaimer</div> <div>© Irish Rail (2023). This drawing is confidential and the copyright in it is owned by Irish Rail. This drawing must not be either loaned, copied or otherwise reproduced in whole or in part or used for any purpose without the prior permission of Irish Rail.</div> <div>© OpenStreetMap contributors</div> <div>© Ordnance Survey Ireland and Government of Ireland. All O.S. data used for plans are printed under "Copyright Ordnance Survey Ireland 0038723 (OSI Aerial Data or OSI Lidar Data) &amp; 2023/OSI_NMA_100 (OSI Vector Data)". All elevations are in metres and relate to OSI Geoid Model (OSGM02) Malin Head as defined by existing Project Control. All Co-ordinates are in Irish Transverse Mercator Grid (ITM) as defined by OSI active GPS station Tallaght College (TLLG).</div>		<div><div><div><div></div><div></div><div></div></div><div><div>DART+</div><div>Coastal North</div></div></div><div><div><div><div>NTA</div><div>Údaráis Náisiúnta Iompartha</div><div>National Transport Authority</div></div><div><div><div></div><div></div></div><div><div>Tionscadal Éireann</div><div>Project Ireland</div><div>2040</div></div></div></div></div></div>		<table><tr><th>Rev</th><th>Date</th><th>Drm</th><th>Chk'd</th><th>App'd</th><th>Description</th></tr><tr><td>P01</td><td>21/02/2024</td><td>SMW</td><td>DB</td><td>GS</td><td>PLANNING ISSUE</td></tr><tr><td> </td><td> </td><td> </td><td> </td><td> </td><td> </td></tr><tr><td> </td><td> </td><td> </td><td> </td><td> </td><td> </td></tr><tr><td> </td><td> </td><td> </td><td> </td><td> </td><td> </td></tr></table>	Rev	Date	Drm	Chk'd	App'd	Description	P01	21/02/2024	SMW	DB	GS	PLANNING ISSUE																			<div><div><div><div></div><div></div><div></div></div><div><div>Iarnród Éireann</div><div>Irish Rail</div></div></div><div><table><tr><td>Date</td><td>14/04/2023</td><td>Scale</td><td>1:2500 @ A1 1:5000 @ A3</td><td>Drawn</td><td>SR</td><td>Checked</td><td>RS</td><td>Approved</td><td>GS</td></tr><tr><td>Project Code</td><td>D+WP56</td><td>Originator Code</td><td>ARP</td><td>QMS Code</td><td colspan="4">280275-00</td><td>Drawing File Name</td><td>D+WP56-ARP-P3-NL-DR-GE-002011</td></tr><tr><td colspan="4"></td><td>Sheet Number</td><td colspan="2">11 of 23</td><td>Status</td><td>S3</td><td>Rev</td><td>P01</td></tr></table></div></div>	Date	14/04/2023	Scale	1:2500 @ A1 1:5000 @ A3	Drawn	SR	Checked	RS	Approved	GS	Project Code	D+WP56	Originator Code	ARP	QMS Code	280275-00				Drawing File Name	D+WP56-ARP-P3-NL-DR-GE-002011					Sheet Number	11 of 23		Status	S3	Rev	P01	<div>Engineering Designer</div> <div><div>ARUP</div><div>NON-TECHNICAL SUMMARY DRAWINGS MALAHIDE VIADUCT AND SURROUNDS</div></div> <div><div>Project Title</div><div>DART+ COASTAL NORTH</div><div>Drawing Title</div><div></div></div>
Rev	Date	Drm	Chk'd	App'd	Description																																																															
P01	21/02/2024	SMW	DB	GS	PLANNING ISSUE																																																															
Date	14/04/2023	Scale	1:2500 @ A1 1:5000 @ A3	Drawn	SR	Checked	RS	Approved	GS																																																											
Project Code	D+WP56	Originator Code	ARP	QMS Code	280275-00				Drawing File Name	D+WP56-ARP-P3-NL-DR-GE-002011																																																										
				Sheet Number	11 of 23		Status	S3	Rev	P01																																																										

DO NOT SCALE USE FIGURED DIMENSIONS ONLY







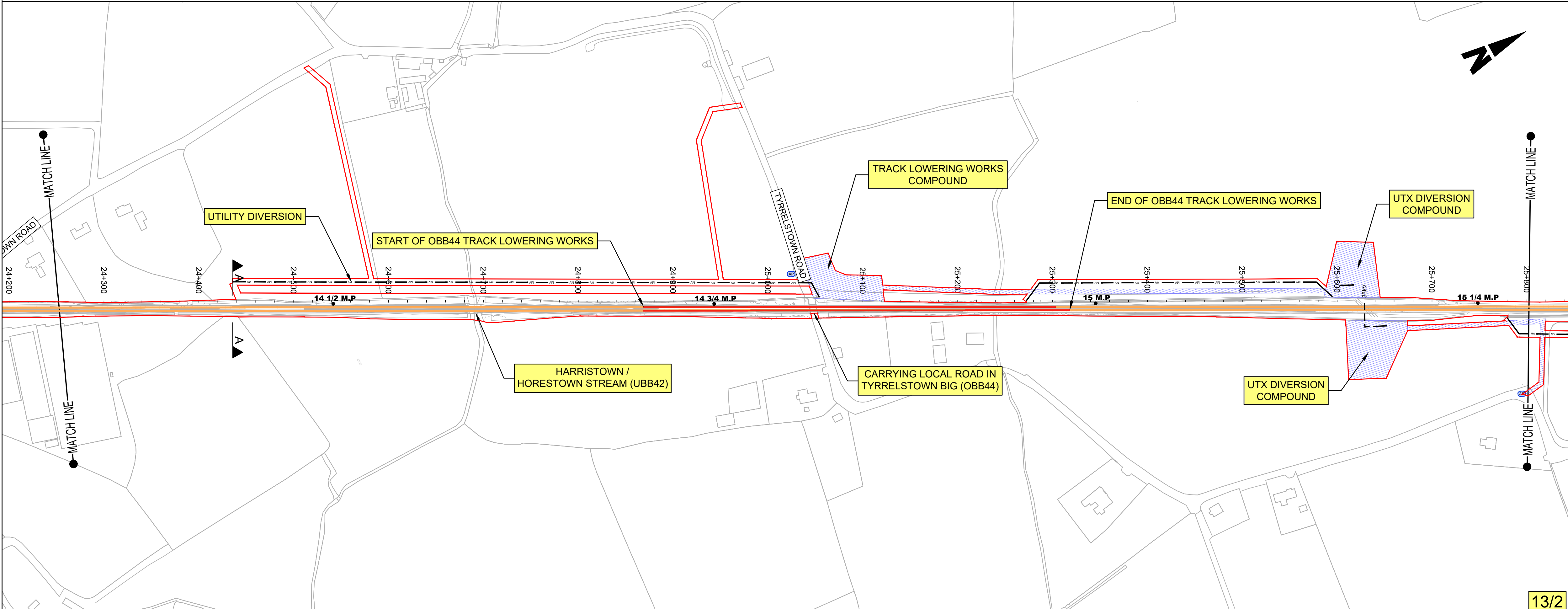


NOTES:

- THIS PLAN MUST BE READ IN CONJUNCTION WITH THE DRAFT RAILWAY ORDER SCHEDULES, THE ENVIRONMENTAL IMPACT ASSESSMENT REPORT AND THE RAILWAY ORDER PLANS.
- PROJECT CHAINAGE IS IN KILOMETRES (KM). ROUTE MILE POSTS ARE SHOWN FOR INFORMATION.

LEGEND:

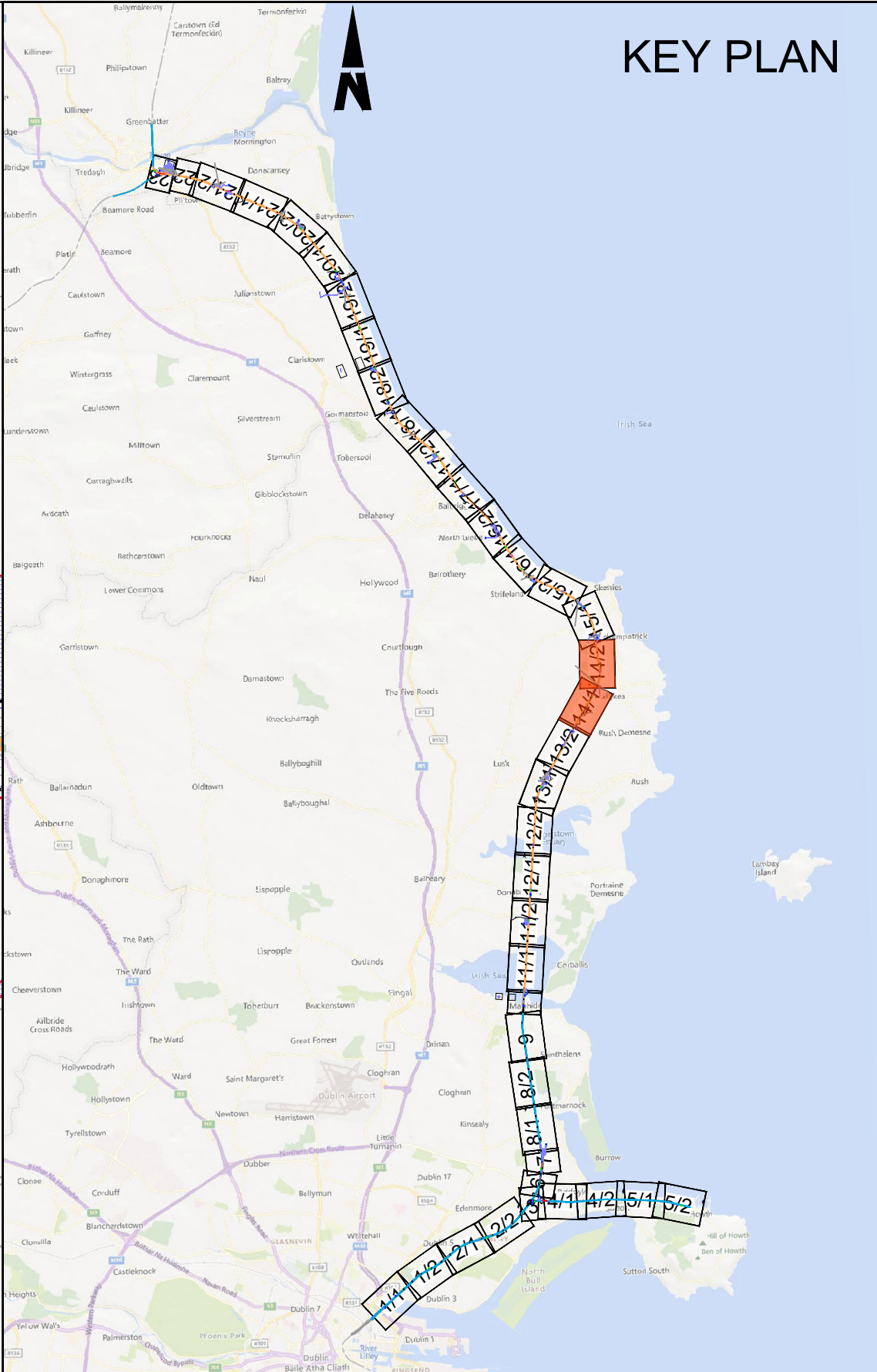
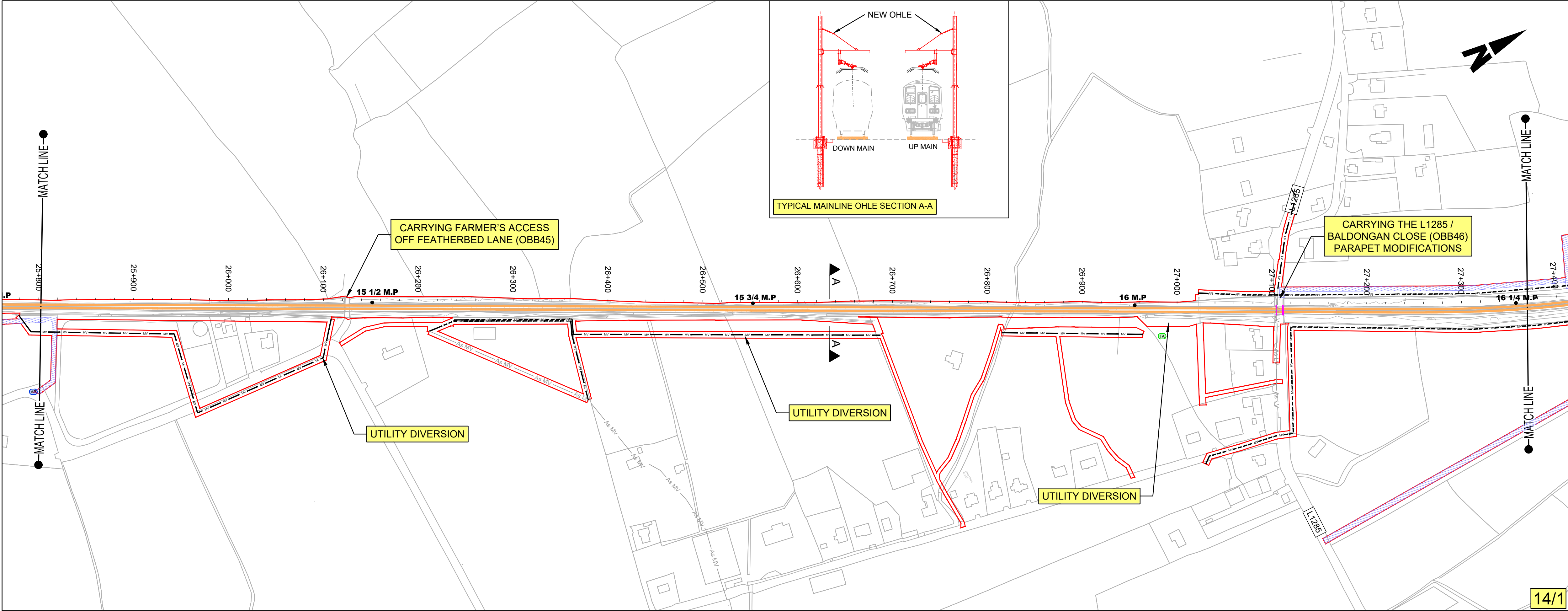
- DEVELOPMENT BOUNDARY
- PROPOSED COMPOUND ACCESS POINTS
- EXISTING TRACK ACCESS POINTS
- MILEPOST
- NEW ELECTRIFICATION AND / OR TRACK WORKS IN EXISTING RAIL CORRIDOR
- EXISTING RAIL CORRIDOR - MINIMAL OR NO WORKS REQUIRED
- EXISTING RAIL TRACK REMOVED
- NEW ELECTRIFICATION IN EXISTING RAIL CORRIDOR
- VIADUCT MODIFICATIONS
- PARAPET MODIFICATIONS
- 38KV OVERHEAD DIVERSION
- 38KV UNDERGROUND DIVERSION
- MV OVERHEAD DIVERSION
- MV UNDERGROUND DIVERSION
- LV OVERHEAD DIVERSION
- LV UNDERGROUND DIVERSION
- EIR OVERHEAD DIVERSION
- EIR UNDERGROUND DIVERSION
- BT UNDERGROUND DIVERSION
- COMBINED SEWER DIVERSION
- EXISTING UTILITIES ASSUMED POSITION
- PROPOSED SUBSTATION / SUBSTATION COMPOUND
- CONSTRUCTION COMPOUND
- NEW, PROPOSED OR MODIFIED INFRASTRUCTURE
- EXISTING STATION
- PROPOSED PLATFORM
- LOCAL AUTHORITY BOUNDARY
- BRIDGES
- OBXX EXISTING BRIDGE / ROAD OVER RAILWAY CORRIDOR
- UBXX EXISTING BRIDGE / ROAD/RIVER UNDER RAILWAY CORRIDOR



<div>Disclaimer</div> <div>© Irish Rail (2023). This drawing is confidential and the copyright in it is owned by Irish Rail. This drawing must not be either loaned, copied or otherwise reproduced in whole or in part or used for any purpose without the prior permission of Irish Rail.</div> <div>© OpenStreetMap contributors</div> <div>© Ordnance Survey Ireland and Government of Ireland. All O.S. data used for plans are printed under "Copyright Ordnance Survey Ireland 0038723 (OSI Aerial Data or OSI Lidar Data) &amp; 2023/OSI_NMA_100 (OSI Vector Data)". All elevations are in metres and relate to OSI Geoid Model (OSGM02) Mean Head as defined by existing Project Control. All Co-ordinates are in Irish Transverse Mercator Grid (ITM) as defined by OSI active GPS station Tallaght College (TLLG).</div>		<div><div><div><div></div><div></div><div></div></div><div><div>DART+</div><div>Coastal North</div></div></div><div><div><div><div>NTA</div><div><div>Údaráil Náisiúnta Iomparáil</div><div>National Transport Authority</div></div></div><div><div><div></div><div></div></div><div><div>Tionscadal Éireann</div><div>Project Ireland</div><div>2040</div></div></div></div></div></div>		<table><tr><th>Rev</th><th>Date</th><th>Drn</th><th>Chk'd</th><th>App'd</th><th>Description</th></tr><tr><td>P01</td><td>21/02/2024</td><td>SMW</td><td>DB</td><td>GS</td><td>PLANNING ISSUE</td></tr><tr><td> </td><td> </td><td> </td><td> </td><td> </td><td> </td></tr><tr><td> </td><td> </td><td> </td><td> </td><td> </td><td> </td></tr><tr><td> </td><td> </td><td> </td><td> </td><td> </td><td> </td></tr></table>	Rev	Date	Drn	Chk'd	App'd	Description	P01	21/02/2024	SMW	DB	GS	PLANNING ISSUE																			<div><div><div><div></div><div></div><div></div></div><div><div>Iarnród Éireann</div><div>Irish Rail</div></div></div><div><table><tr><td>Date</td><td>14/04/2023</td><td>Scale</td><td>1:2500 @ A1 1:5000 @ A3</td></tr><tr><td>Project Code</td><td>D+WP56</td><td>Originator Code</td><td>ARP</td></tr></table></div></div>	Date	14/04/2023	Scale	1:2500 @ A1 1:5000 @ A3	Project Code	D+WP56	Originator Code	ARP	<div>Engineering Designer</div> <div><div>ARUP</div><div><table><tr><td>Drawn</td><td>SR</td><td>Checked</td><td>RS</td><td>Approved</td><td>GS</td></tr><tr><td>QMS Code</td><td colspan="5">280275-00</td></tr></table></div></div>	Drawn	SR	Checked	RS	Approved	GS	QMS Code	280275-00					<div>Project Title</div> <div>DART+ COASTAL NORTH</div> <div>Drawing Title</div> <div>NON-TECHNICAL SUMMARY DRAWINGS RUSH AND LUSK STATION AND SURROUNDS</div> <div><table><tr><td>Drawing File Name</td><td>D+WP56-ARP-P3-NL-DR-GE-002013</td><td>Sheet Number</td><td>13 of 23</td><td>Status</td><td>S3</td><td>Rev</td><td>P01</td></tr></table></div>	Drawing File Name	D+WP56-ARP-P3-NL-DR-GE-002013	Sheet Number	13 of 23	Status	S3	Rev	P01
Rev	Date	Drn	Chk'd	App'd	Description																																																												
P01	21/02/2024	SMW	DB	GS	PLANNING ISSUE																																																												
Date	14/04/2023	Scale	1:2500 @ A1 1:5000 @ A3																																																														
Project Code	D+WP56	Originator Code	ARP																																																														
Drawn	SR	Checked	RS	Approved	GS																																																												
QMS Code	280275-00																																																																
Drawing File Name	D+WP56-ARP-P3-NL-DR-GE-002013	Sheet Number	13 of 23	Status	S3	Rev	P01																																																										

DO NOT SCALE USE FIGURED DIMENSIONS ONLY



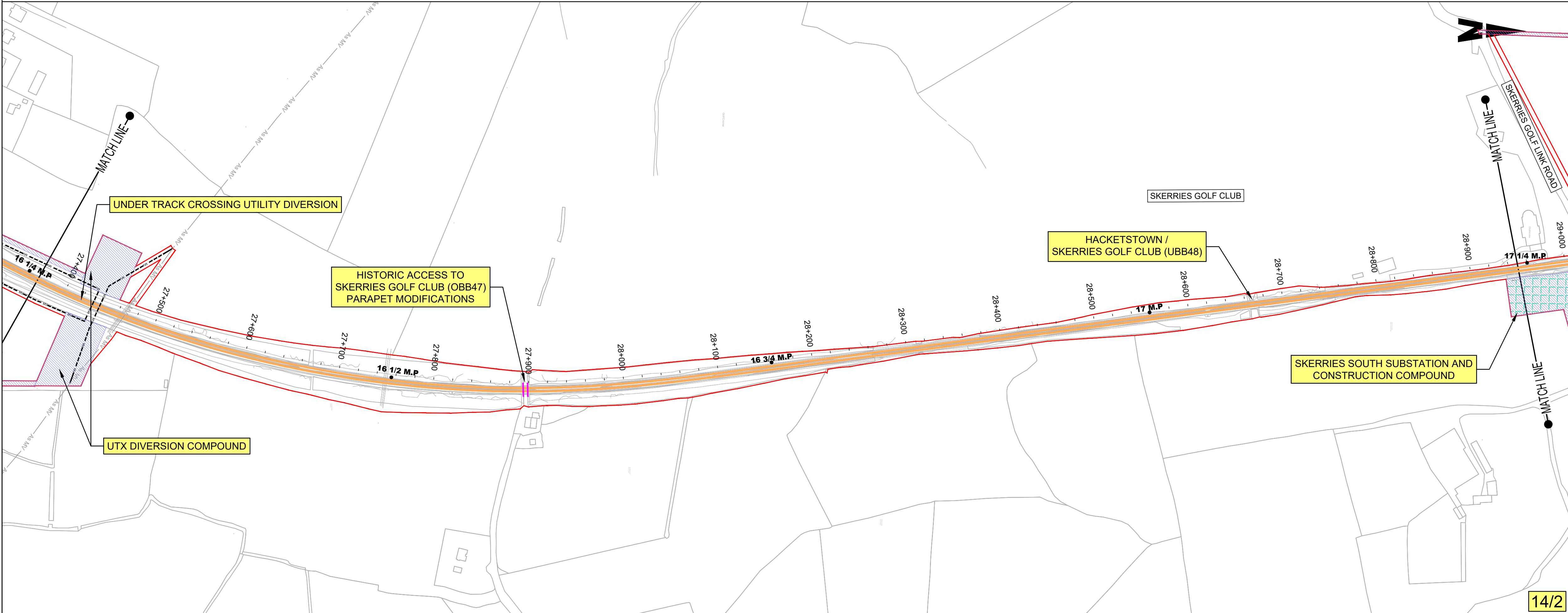


NOTES:

- THIS PLAN MUST BE READ IN CONJUNCTION WITH THE DRAFT RAILWAY ORDER SCHEDULES, THE ENVIRONMENTAL IMPACT ASSESSMENT REPORT AND THE RAILWAY ORDER PLANS.
- PROJECT CHAINAGE IS IN KILOMETRES (KM). ROUTE MILE POSTS ARE SHOWN FOR INFORMATION.

LEGEND:

- DEVELOPMENT BOUNDARY
- PROPOSED COMPOUND ACCESS POINTS (AP)
- EXISTING TRACK ACCESS POINTS (TA)
- MILEPOST (M.P.)
- NEW ELECTRIFICATION AND / OR TRACK WORKS IN EXISTING RAIL CORRIDOR
- EXISTING RAIL CORRIDOR - MINIMAL OR NO WORKS REQUIRED
- EXISTING RAIL TRACK REMOVED
- NEW ELECTRIFICATION IN EXISTING RAIL CORRIDOR
- VIADUCT MODIFICATIONS
- PARAPET MODIFICATIONS
- 38KV OVERHEAD DIVERSION
- 38KV UNDERGROUND DIVERSION
- MV OVERHEAD DIVERSION
- MV UNDERGROUND DIVERSION
- LV OVERHEAD DIVERSION
- LV UNDERGROUND DIVERSION
- EIR OVERHEAD DIVERSION
- EIR UNDERGROUND DIVERSION
- BT UNDERGROUND DIVERSION
- COMBINED SEWER DIVERSION
- EXISTING UTILITIES ASSUMED POSITION
- PROPOSED SUBSTATION / SUBSTATION COMPOUND
- CONSTRUCTION COMPOUND
- NEW, PROPOSED OR MODIFIED INFRASTRUCTURE
- EXISTING STATION
- PROPOSED PLATFORM
- LOCAL AUTHORITY BOUNDARY
- BRIDGES
- OBXX EXISTING BRIDGE / ROAD OVER RAILWAY CORRIDOR
- UBXX EXISTING BRIDGE / ROAD/RIVER UNDER RAILWAY CORRIDOR



<div>Disclaimer</div> <div>© Irish Rail (2023). This drawing is confidential and the copyright in it is owned by Irish Rail. This drawing must not be either loaned, copied or otherwise reproduced in whole or in part or used for any purpose without the prior permission of Irish Rail.</div> <div>© OpenStreetMap contributors</div> <div>© Ordnance Survey Ireland and Government of Ireland. All O.S. data used for plans are printed under "Copyright Ordnance Survey Ireland 0038723 (OSI Aerial Data or OSI Lidar Data) &amp; 2023/OSI_NMA_100 (OSI Vector Data)". All elevations are in metres and relate to OSI Geoid Model (OSGM02) Malin Head as defined by existing Project Control. All Co-ordinates are in Irish Transverse Mercator Grid (ITM) as defined by OSI active GPS station Tallaght College (TLLG).</div>		<div><div><div><div></div><div></div><div></div></div><div><div>DART+</div><div>Coastal North</div></div></div><div><div><div><div></div><div></div><div></div></div><div><div>NTA</div><div><div>Údaráis Náisiúnta Iompartha</div><div>National Transport Authority</div></div></div></div><div><div>Tionscadal Éireann</div><div>Project Ireland</div><div>2040</div></div></div></div>		<table><tr><th>Rev</th><th>Date</th><th>Drn</th><th>Chk'd</th><th>App'd</th><th>Description</th></tr><tr><td>P01</td><td>21/02/2024</td><td>SMW</td><td>DB</td><td>GS</td><td>PLANNING ISSUE</td></tr><tr><td> </td><td> </td><td> </td><td> </td><td> </td><td> </td></tr><tr><td> </td><td> </td><td> </td><td> </td><td> </td><td> </td></tr><tr><td> </td><td> </td><td> </td><td> </td><td> </td><td> </td></tr></table>	Rev	Date	Drn	Chk'd	App'd	Description	P01	21/02/2024	SMW	DB	GS	PLANNING ISSUE																			<div><div><div><div></div><div></div><div></div></div><div><div>Iarnród Éireann</div><div>Irish Rail</div></div></div><div><div>Date</div><div>14/04/2023</div></div><div><div>Scale</div><div>1:2500 @ A1</div><div>1:5000 @ A3</div></div><div><div>Drawn</div><div>SR</div></div><div><div>Checked</div><div>RS</div></div><div><div>Approved</div><div>GS</div></div><div><div>Project Code</div><div>D+WP56</div></div><div><div>Originator Code</div><div>ARP</div></div><div><div>QMS Code</div><div>280275-00</div></div></div>	<div>Engineering Designer</div> <div><div><div></div><div></div><div></div></div><div><div>ARUP</div></div></div> <div><div>Project Title</div><div>DART+ COASTAL NORTH</div></div> <div><div>Drawing Title</div><div>NON-TECHNICAL SUMMARY DRAWINGS SKERRIES GOLF CLUB AND SURROUNDS</div></div> <div><div>Drawing File Name</div><div>D+WP56-ARP-P3-NL-DR-GE-002014</div></div> <div><div>Sheet Number</div><div>14 of 23</div></div> <div><div>Status</div><div>S3</div></div> <div><div>Rev</div><div>P01</div></div>
Rev	Date	Drn	Chk'd	App'd	Description																															
P01	21/02/2024	SMW	DB	GS	PLANNING ISSUE																															

DO NOT SCALE USE FIGURED DIMENSIONS ONLY







